

# The Railyard Local

Volume 4, Issue 10

-The Monthly Newsletter of the Danbury Railway Museum-

October 2005

## Pumpkin Patch Trains

### Immensely Successful Event to be Repeated

Ever since last October, when the DRM welcomed great numbers of happy families to the Pumpkin Patch event, we have anticipated holding this event again. For three weekends, October 15 & 16, 22 & 23, and 29 & 30, ticket holders will have an opportunity to ride a vintage train to our special pumpkin patch to pick out a pumpkin. The Museum will be open from 10am to 5pm each day to accommodate the anticipated guests. We are already beginning to decorate for the event. Tickets will be \$9 for adults, \$6 for children ages 3-12, with younger children free. All this will be in addition to our usual attractions. Remember, each week we make additions to the railyard and Museum building displays, so if you haven't been here in a few weeks, there will be positive changes that you haven't seen yet! Come join us.



## DRM Helps Red Cross

Danbury Railway Museum, out of concern for the victims of Hurricane Katrina, donated \$165, half the proceeds of the three-day Labor Day weekend, to the American Red Cross.

## Mailing to Teachers a Group Effort

The DRM extends thanks to the many volunteers who participated in preparing the very large mailing to teachers, encouraging them to schedule class trips to our Museum. Howard and Shirley Peatfield, Nanci Hennessey, John O'Hern, Dave Roberts, Patricia and Sofia Giurgescu, Jerry Lawlor, Charlie Albanetti, Carolyn Taylor, along with Bethel High School students Dan Jennings, Greg and Stephen Muffatti, made the mailing possible.

## In This Issue

~What's Happening - page 4  
~Kids' - Tracks- page 5  
~Historical Photos - page 6  
plus . . .  
Gift Shop and Library News

## Members Make Your List!

### Member Appreciation Weekend Is Coming

It's almost here again, so get ready. On the Friday, Saturday, and Sunday of Thanksgiving weekend, November 25-27<sup>th</sup>, our Gift Shop once again will give a 20% discount to DRM members. So read about our new items, visit the Gift Shop to make your wish list, and plan for holiday shopping. Those guests who become new members that weekend will be eligible for the 20% discount immediately.

## Danbury Days on Sept 11<sup>th</sup>

Ticket holders sample Danbury Railway Museum

The DRM once again participated in Danbury Days. Trolley transportation was provided to three local museums, including the DRM. We were pleased to welcome ticket holders for the event, and hope their visit here whetted their appetite for more visits to our Museum!



## Safety Reminder

The DRM has a **working** railyard. Members as well as non-member guests must observe the safety rules and signage in the yard. All member volunteers who help in the railyard must annually pass our safety exam and observe the safety requirements as a condition of being in track and other non-public areas of the yard.

## New Members

We are delighted to welcome our new members this month. All members are welcome to attend the weekly meetings held Wednesdays, 7:45pm, at the Museum, 120 White Street, Danbury. We invite all members to become involved in Museum activities as soon as possible!

### Upgraded New Life Members

Chris Blackman

John O'Hern

### New Members

Lucas Von Hoffman

Ronald Boylan

Kathy Banks

Sofia & Ilarie Giurgescu

Robert Pfiefer

Harry Alisia

Hamilton Monteiro

Wayne A. Covell

Brian & Stacey Hicks

Marguerite Franceski

Alan Chang

Rebecca & Frank Connard III

Kerry Hanifin

Laura Sloat

Carolyn Canavan

Nanci Hennessey

Anne Dulak

T.S. Ganesch

Mark Zona

David Fabrizio

Craig Mitchell

Jeanne D. Lesoravage

Nagya Antonides

Wilton, CT

Ridgefield, CT

Oakville, CT

Danbury, CT

Yorktown Heights, NY

New Fairfield, CT

Ridgefield, CT

Newtown, CT

Pound Ridge, NY

Stamford, CT

Fairfield, CT

Ridgefield, CT

Chappaqua, NY

Yorktown Heights, NY

Ridgefield, CT

Danbury, CT

Carmel, NY

Bedford Hills, NY

Milford, CT

New Milford, CT

Brookfield, CT

Stamford, CT

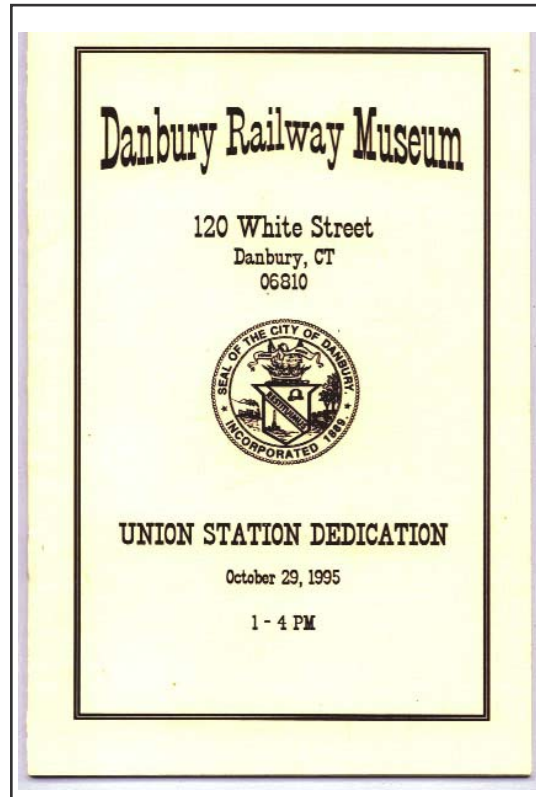
Ridgefield, CT

## Ten Years Ago

By Stan Madyda

There does not appear to have been a newsletter published in October 1995. This could be because everyone was busy making final preparations for the Station Dedication, to be held on October 29<sup>th</sup>.

For the Dedication, a souvenir program was printed. In addition to the program of the day, it con-



tained the Mission Statement of the Museum, photos, membership information and upcoming events. There was a letter of introduction about the Museum and its goals written by Peter Cornwall. Rober Pitt Whitcomb, the architect involved with the

restoration, wrote a summary report. Paulette Pepin, President of the Danbury Preservation Trust, also wrote a letter of congratulations.

## Member News

A daughter, Caitlin Rose, 8 lb. 2 oz., was born August 26<sup>th</sup> to DRM members Randy and Maureen Natale. Congratulations on the addition of another railfan to your family!



Danbury Union Station circa 1907

## DRM Policy on Pets

The Board of Directors has approved a policy that no animals shall be allowed in the Museum building or in the DRM railyard, other than service animals(e.g. seeing eye dogs).

# DRM Express Track

By Ira Pollack, President

This month I'd like to first wish you all well, with good health.

As you've probably noticed, the summer season is drawing to a close with cooler temperatures and less light at the end of the day. We've been very busy in the yard though, trying to finish off some of the projects that we have before us.

All in all, it has been a pretty successful summer. Our yard is looking better and better. Every weekend and sometimes during the week, our yard crew volunteers are either cleaning up, hanging signs, putting together new exhibits, making repairs and improvements, or painting our equipment. There seems to be no end to these projects to improve the railyard, but compliments from our guests show that it has made a difference. As an example, just look in our guest book in the station.

My only problem is I just wish there were more people volunteering to help us grow and achieve our goals. Although it does get frustrating from time to time because we want to reach these goals faster, we are making progress. To give you an example, the east end of the yard is almost free of the old tie pile, wood and garbage that had accumulated over the years. Eventually this area will be our base of operations with most of our restoration work going on there. This, of course, is a long-range plan, but we have to start somewhere. Realize that this has been a major feat for the Museum, but was done with the help of our outside-the-gate friends. There are many other projects like these. The Museum needs other people to



come forward; our present staff is doing all it can. I thought I'd list some of these projects for you, just to let you know what needs to be done - some in the immediate future. Hopefully we can complete some of these before the winter snows begin to fly.

1. Trackwork maintenance - tightening and replacement of bolts and ties on tracks 34 and 42, regauging, tamping
2. Doors for the tool trailer, sides reattached
3. Sorting all of the track parts; doing an inventory of them
4. Sliding gate at pedestrian entrance rehung

5. Plastic installed on face of "You Are Here" sign
6. New sheet metal primed on #1402 RS11 locomotive
7. Old lettering completely removed on #1402
8. Box and reweld frame of F150 snowplow
9. Seal containers with fiberglass patches
10. Paint DRM float black
11. Sperry car #135 pilot straightened and installed
12. Forge sealed for winter
13. Lettering for #1455 completed
14. Lettering for New Haven boxcar completed



## Library News

by Stan Madyda

2005 has been a busy year with new donations. Here are some of the more recent additions to our Archives.

Scott Cauchois - HO trains

Stephen W. Hayes - 57 timetables, brochures

Ralph W. Holibaugh - 11 framed prints, oil painting

Jonathan Koza - American Steam Video Collection

Hilda Wadhams - Litchfield and Bantam station signs, oil cans, timetables, books, manuals, Milwaukee Road Hiawatha casting

Tom Hurgin - electric meters, reostat, precision thermometer

Ron and Joan Sudol - hand operated wall drill press

David Barr, Jr - railroad manuals, engine schematics

Thomas Kerr - book on Grand Central Terminal

Robert Leavitt - books, official guides, railroad board game, employee timetables

Kyle Kaylor - N gauge trains

Jack Swanberg - Croton-Harmon station sign, passenger car frames and cushions, headlight casting for an FA locomotive

Estate of John Aherns - 5 boxes of slides

John B. Sanford III - New Haven stock certificate, 1959 Lionel catalog

Philip Bronson - 2 clinker hooks from a steam engine

Robert Stefawell - date stamps and parts, unused tickets from Danbury Union Station

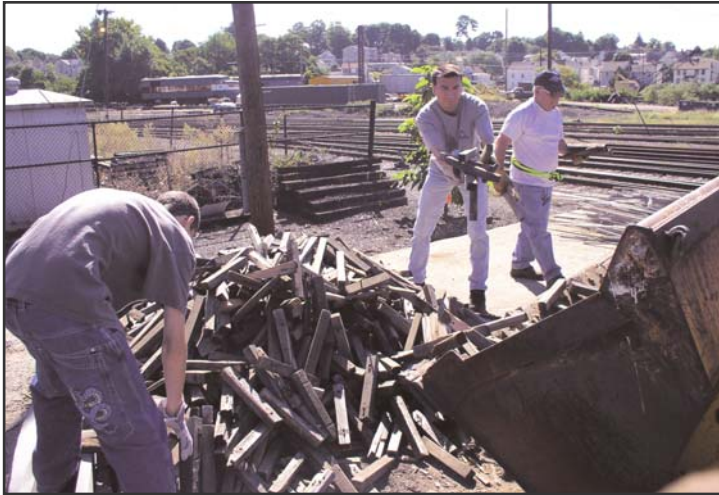
Jim Towey - N gauge trains, magazine

Michael Nadler - newsletters, timetables, magazines (mostly foreign)

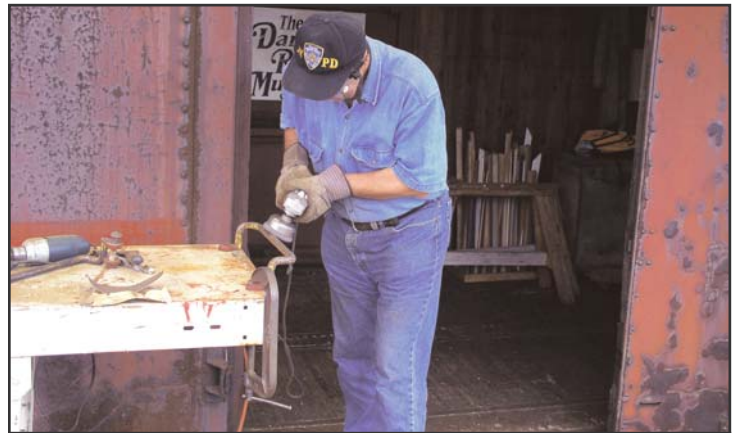
Thomas Faucher - N gauge kits (2) of New York Central 1900 wooden caboose

# What's Happening?

We have been making progress in a number of different areas and diverse projects.



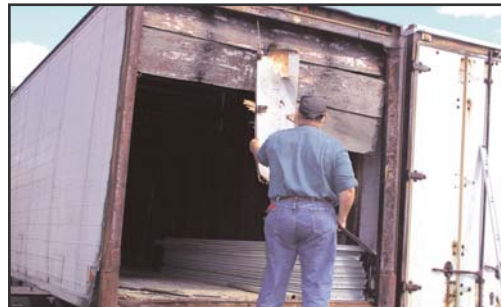
On Saturday, September 10<sup>th</sup> many volunteers pitched in to fill up a small dumpster with useless scraps and debris. Among those helping were (above) Matt Landau, Mike Madyda, and John Ivansco, shown filling the bucket of the backhoe. Ira Pollack operated the backhoe, making several trips with it to the dumpster, then compressing the material (below). Bob Pitcher and John Ivansco take a momentary break to watch. Matt Manske, Bill Britt, Carolyn Taylor, and Dave Roberts also contributed to this improvement in the appearance of the DRM railyard.



One of our newest members and already a volunteer, Ilarie Giurgescu, has assisted with the restoration of the NYC caboose. Here he is removing rust and paint from a grab iron.



The erection and restoration of the Wilton semaphore, as well as the creation of an operator's shed has definitely been a group effort. The latest improvements have been the addition of a Wilton sign above the door, and installation of underground electric wiring, courtesy of Dan Carleton, for eventual lighting of the semaphore lenses.



Bob Pitcher was one of those removing the non-functioning trailer doors. We need to build new doors for it, and reattach the sides.



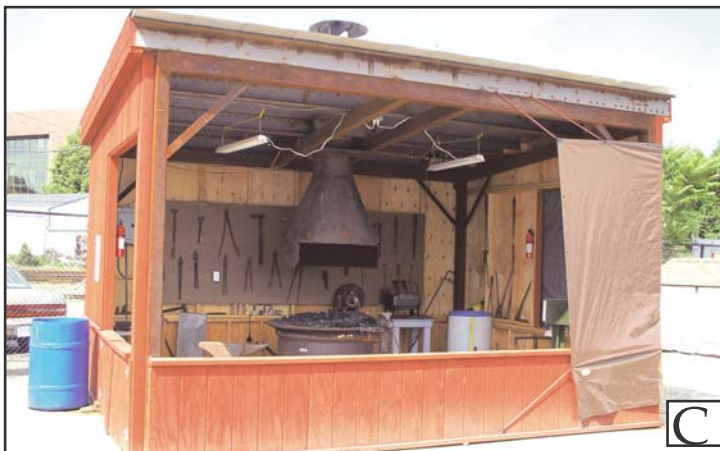
Our Schramm air compressor needed mechanical and cosmetic restoration. Once again Bob Pitcher amazed us with his skills. It now is able to perform a much needed duty in the railyard, and has been transformed from the blue-green and rusty piece on the left to an eye-popping shiny bright-red wonder of machinery (right).



# Kids' Tracks

Can you match the pictures of these railyard pieces with their names?

1. Boston & Maine steam locomotive \_\_\_\_\_
2. Wilton semaphore \_\_\_\_\_
3. Sperry rail flaw testing car \_\_\_\_\_
4. turntable \_\_\_\_\_
5. New Haven box car \_\_\_\_\_
6. New Haven forge \_\_\_\_\_
7. passenger car \_\_\_\_\_



S

# Historical Photos

During the last ten years, the Reference and Research Library has received numerous donations that have included photographs and negatives. Many do not have any notation as to when or where they were taken. Sometimes we are able to figure out what the subject is, usually an engine or a facility. Here are some photos from the Peter Cornwall Collection.

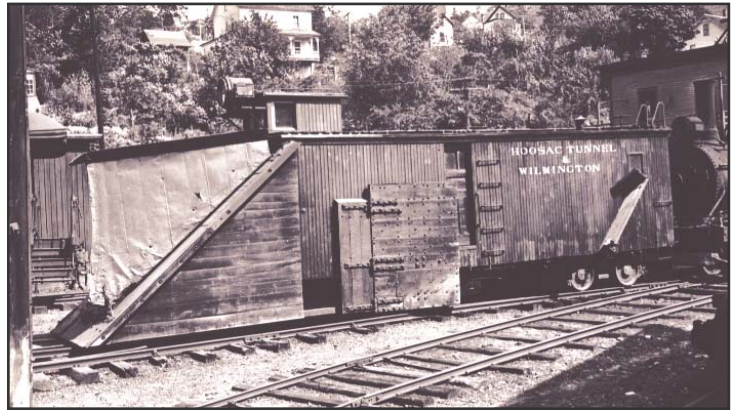


Here is the original station located in Wilton, CT circa 1936. The building was later moved away from the railroad to another location in Wilton.



Pacific 3630 seems more than adequate for the three-car train 5504, from Bellows Falls to Boston, seen here near Winchendon, April 20, 1936. The track crew will have this part of the Cheshire Branch to themselves for three hours until the northbound Green Mountain Flyer is due.

The Library has a work session every Tuesday beginning about 7:30. Most Wednesday evenings the Library is open during the member meetings. The Library is also open by a appointment for anyone wishing to do research or view the collections. Please contact Gerry Herrmann or Stan Madyda at the Museum, 203-778-8337.



Like every short line in northern New England, the Hoosac Tunnel & Wilmington must have a servicable plow to keep its line open the winter. Like most, this affair is home-made. The much battered fin in front serves to part the snow after a fashion. Note the very light rail - typical of the Readsboro yard track in August 1935.

## Rail Post Office Car Fund Drive

The DRM has started a fund drive to raise money for the restoration of the Pennsylvania Railroad rail post office car recently donated to the Museum by the Housatonic Railroad.



One of the early phases of this project will be the replacement of the missing window glazing. The purpose is to seal out the weather to prevent further deterioration and to achieve partial stabilization of the interior of the car.

A donation of \$200 will buy one replacement safety-glass window glazing, including installation into the frame. Our goal is to raise \$2900 for this phase of the project. To commemorate your donation, a plaque will be erected within the car to acknowledge your generosity and help in restoring this unique piece. Please make your checks out to the Danbury Railway Museum with the memo "RPO Restoration".

Thank you for your help.

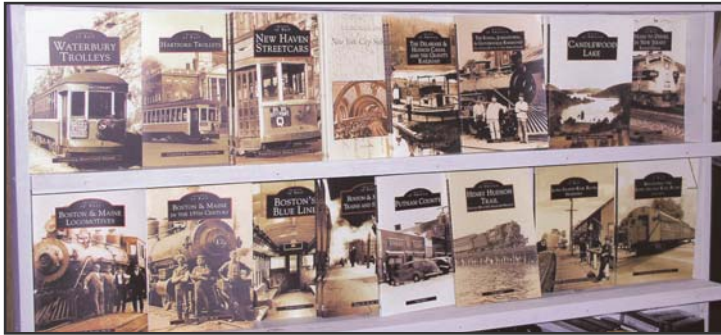
Bill Britt  
Project Leader

Ira Pollack  
President

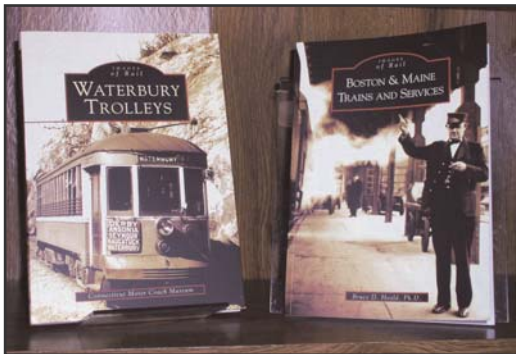
# Gift Shop News

By Patty Osmer

Our 2006 limited edition commemorative HO car is in! This year, we are featuring a 40' white chemical tanker sporting the new Danbury Railway Museum logo in maroon. Member price is \$14.40. For mail orders, please send a check for \$18.80 (includes Priority Mail shipping) to the Museum, c/o Gift Shop.



We have two new books from Arcadia Publishing's "Image of Rail" series (shown above): WATERBURY TROLLEYS and MAINE TRAINS & SERVICES. Full of black & white photos, these latest additions to our collection sell for \$18.00 each to members. WATERBURY TROLLEYS traces the growth and



expansion of the streetcar system throughout the Naugatuck Valley until the streetcar was replaced by buses in 1937. BOSTON &

MAINE TRAINS & SERVICES covers Pullman passenger cars, work trains, circus trains, plows, cabooses as well as the B&M bus service, trucks and air service.



We also have received an entire new collection of Christmas cards. We sell a variety of colorful metal train logos great for decorating any railroad fan's room or layout. Stop in today and check us out!

# Meet Our ACMUs!



Top: ACMUs 1128 and 1171 at the DRM. Top interior photo: Stan Madyda relaxes on the blue appolstered seats of the 1171. He has already done some cleanup in the cars. Restoration awaits. Above: Looking from the 1128 into the 1171. Below: Stan's at the controls of the 1128, but not going anywhere! Still it's great to imagine operating the car.



PO Box 90, DANBURY, CT 06813

NONPROFIT ORGANIZATION  
U.S. POSTAGE PAID  
DANBURY, CT  
PERMIT NO. 569

## MUSEUM CALENDAR

- |                 |  |
|-----------------|--|
| Oct 19 (7:45pm) | Slides w/comments - Pete McLachlan         |
| Oct 20 (7:00pm) | Board Meeting (Open to Members)            |
| Oct 26 (7:45pm) | Slides fr his collection - Ed Blackman     |
| Nov 2 (7:45pm)  | Favorites in North America - Roger Coleman |
| Nov 9 (7:45pm)  | Kitbashing(Modeling) - Wade Roesse         |
| Nov 16(7:45pm)  | Slides fr his collection - Ed Blackman     |
| Nov 20(7:00pm)  | Board Meeting (Open to Members)            |
| Nov 23          | No Show - Happy Thanksgiving!              |

Be sure to look for the full color version of this newsletter on our website: [www.danbury.org/drm/](http://www.danbury.org/drm/)



### Contact Information

Please contact us with submissions:  
 Mail: The Danbury Railway Museum  
 Attention: Newsletter  
 PO Box 90, Danbury, CT 06813  
 Phone: 203.778.8337  
 Fax: 203.778.1836  
 Email: [newsletter@danburyrail.org](mailto:newsletter@danburyrail.org)  
 Editor: Carolyn Taylor

Printing by: Infinity Printing of Danbury

### **Change of Address**

If you move, please send your change of address to:  
 Danbury Railway Museum,  
 Attention: Membership Chairman  
 PO Box 90, Danbury, CT 06813  
 Via Email to [drmmembers@sbcglobal.net](mailto:drmmembers@sbcglobal.net)

